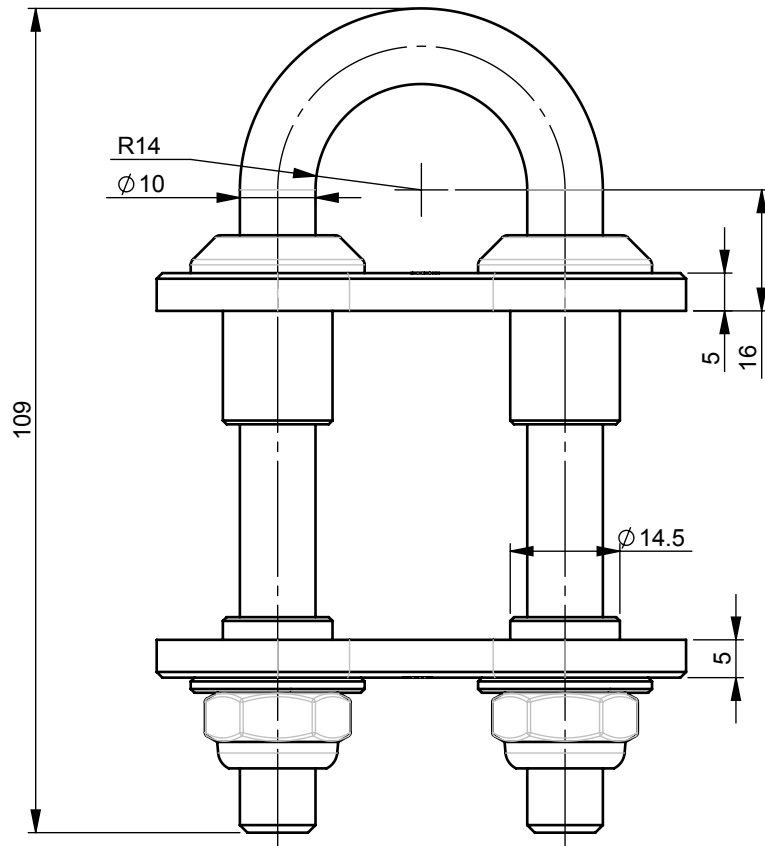
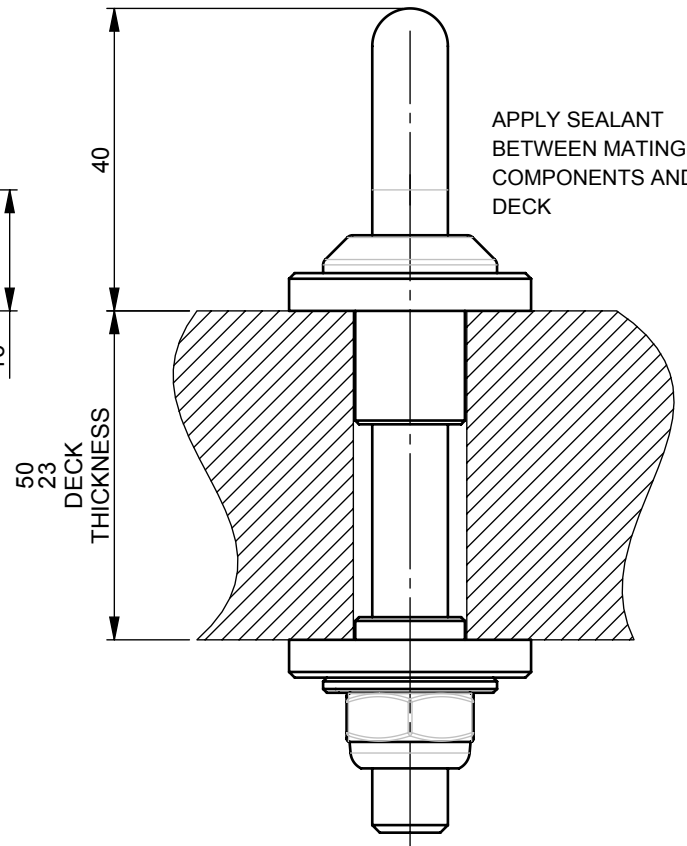
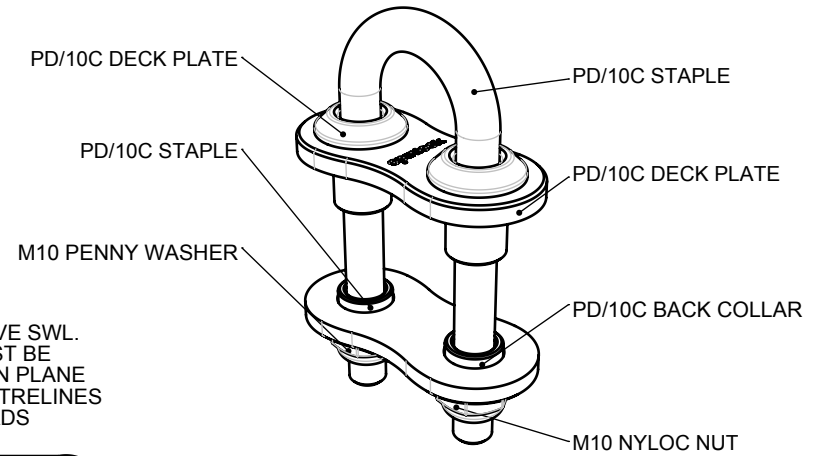


DRILL 2 X 15.0MM HOLES ON 38.0 CENTRES



TO ACHIEVE SWL LOAD MUST BE APPLIED IN PLANE WITH CENTRELINES OF THREADS



APPLY SEALANT BETWEEN MATING COMPONENTS AND DECK

IMPORTANT:

IF NECESSARY, ADJUST THREADED COLLARS TO ENSURE:

STAPLE HEIGHT DOES NOT EXCEED 40MM ABOVE DECK.

DECK PLATE SITS PERPENDICULAR TO STAPLE AXES.

DO NOT OVERTIGHTEN NUTS, MAX TORQUE = 30Nm

APPLY SEALANT/JOINTING COMPOUND BETWEEN THREADED COLLAR, DECK PLATE AND AND STAPLE.

spinlock
BE ADVENTURE-PROOF



WARNING:
IF USING AS TEMPLATE, ENSURE PRINTER SETTINGS ARE ADJUSTED TO ACCOUNT FOR THE DRAWING SCALE AND **ALWAYS** CHECK DIMENSIONS.



COPYRIGHT:
THIS DRAWING IS PROTECTED BY COPYRIGHT. ANY USE IS FORBIDDEN WITHOUT THE WRITTEN CONSENT OF SPINLOCK.

ALL DIMENSIONS IN MM

FASTENERS

WEIGHT

MAX LOAD

SCALE PAGE SIZE DATE

M10 x 2

255g

0° FROM VERTICAL, SWL = 7600KG
45° FROM VERTICAL, SWL = 5250KG
90° FROM VERTICAL, SWL = 5250KG

1:1 A4

APR 2018

PD/10C

FOR MORE INFO CONTACT
SPT@SPINLOCK.CO.UK